

Range of Decors

m.look architectural rainscreen cladding panel (A2)



For you to create



www.fundermax.com

Fundermax



Contents

General Information	4
Properties	6
Range of Decors-Overview	10
Range of Decors	18

Note

Colour deviations to original decors are subject to the printing process.

Fundermax

From furniture and facades to interior design, Fundermax is at the interface of ideas and materials. Today the company – which has a proud history spanning 130 years – stands as a global market leader and producer of high quality materials using wood and laminates. Our lasting success has been based on prime quality, imaginative design, diversity and sustainable production. Our products are „Made in Austria“ and exude a love of the natural resources of wood, creativity and inventiveness.

- modern production facilities in Austria and Norway
- approx. 1,500 employees
- annual turnover of €500 million
- part of Constantia Industries AG
- Staatspreis Unternehmensqualität (2018)

m.look A2 Quality with HPL-surface

A non-combustible panel for
architecturally appealing solutions

m.look

m.look opens a door into a world full of visual highlights and contemporary architecture. A non-combustible material that knows no architectural limits, without height restrictions and A2-s1,d0 classification.

The design of visionary buildings is an exciting challenge that requires ingenuity and experience. Impressive buildings deserve smart materials, which enhance the value of these special places.

m.look is just such a material.

New freedom for creativity

m.look (A2) allows you to implement architectural design ideas beyond 20 metres in height and convincingly brings your creative designs to life.

Previously only limited materials with limited design potential were available. Today, m.look opens up entirely new visual worlds.

Innovative

Through the combination of exciting and innovative new materials, and dedication to continuous developments, not to mention Fundermax's proven production technology, we've created a lightweight and mechanically stable panel.

m.look is an architectural facade panel with an extremely durable, glass fibre reinforced non-combustible core (predominantly mineral) and a highly weather-proof, decorative and patented HPL-surface, whose technology has been used successfully across numerous FunderMax products, for many years. m.look is designed to withstand adverse weather and environmental conditions.

The innovative HPL production process results in a decorative HPL surface with properties tested according to EN438-2.

1 02 Project: MAX & Moritz
Erding, Germany
Planning: Kutzschenbach
Ingenieurbüro für Bauschäden
und Bauwerkserhalt

1 02



1 03 Project: The Tides
Warsaw, Poland
Planning: Architekturbüro
Kurylowicz & Associates

1 03



An A2 material that combines the best of both worlds

Panel size

Length max. 3,580 mm

Width max. 1,580 mm

The panels are delivered cut to customer specifications.

Thicknesses for outdoor use

7 mm for exterior facade applications

9 mm for balconies, railings and stairway balustrade panels

Thicknesses for indoor use

8 mm as architectural wall panel system.

Custom thicknesses of 7, 9, 10 and 12 mm are available upon request.

Please consult Fundermax directly.

9 mm, 12 mm for railings and stairway balustrade panels.

Custom applications are available upon request.

Surface

NT (for outdoor applications)

FH (for indoor applications)

Physical properties

Specific weight 1.8 g/cm³

Fulfils requirements in accordance with EN 438 (outdoor use) for: Climate resistance, UV and weather resistance and surface resistance. You can find more technical information in the „m.look Technical Information“ brochure.

Installation and machining (outdoor use)

Visibly riveted or screwed to a metal substructure with a mounting distance of up to 800 mm / 800 mm.

Like with HPL compact panels, machining requires diamond-tipped tools.

Approvals

Europe

Building material classification A2-s1, d0 according to EN 13501-1

Germany

Allgemeine bauaufsichtliche Zulassung vom Deutschen Institut für Bautechnik Berlin.

Approval number Z-10.3-711

(Exterior - Outdoor use)

Approval number Z-56.426-1017

(Interior - Indoor use)

Austria

Tested to ÖNORM B3800-5 for vertical/sloping facades and soffits.

Switzerland

Building material classification A2-s1, d0 according to EN 13501-1. Signed in the fire register.

Asia

Building material classification A2-s1, d0, t1

USA/Canada

ASTM E136 passed

ASTM E84 Class A

Application Areas

Skyscrapers, shopping malls, train stations, airports, hospitals, public buildings or living areas must provide people with security and protection.

Planning these structures is a delightful challenge that demands ingenuity and experience. m.look meets those challenges, breaks new ground and allows visionary solutions.

1 04 Project: Milaneo
Stuttgart, Germany
Planning: RKW Architektur
und Städtebau

1 04



m.look architectural- rainscreen-panel with HPL-surface



- Extensive design/decor range (Uni, Nature, Material)
- Large format/economical
- UV and weather resistant (incl. hail test)
- Application in combination with Max Compact Exterior
- Increased scratch resistance
- High impact protection
- High breaking strength on corners and edges
- Permanent anti-graffiti protection
- Certificates and approvals for commercial use
- Longevity
- Large distances between fixings, less installation effort
- Made using the HPL process
- No edge sealing necessary
- Decades of experience



reaction to Fire
EN 13501.1, A2-s1, d0



scratch resistance abrasion
EN 438-2/25



low thickness swelling
EN 317



highly weather-resistant



chemical resistance



use of both sides



light fastness
EN-438-2/29



impact resistance
EN 438-2/21



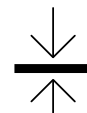
dimensional change
ETAGO34



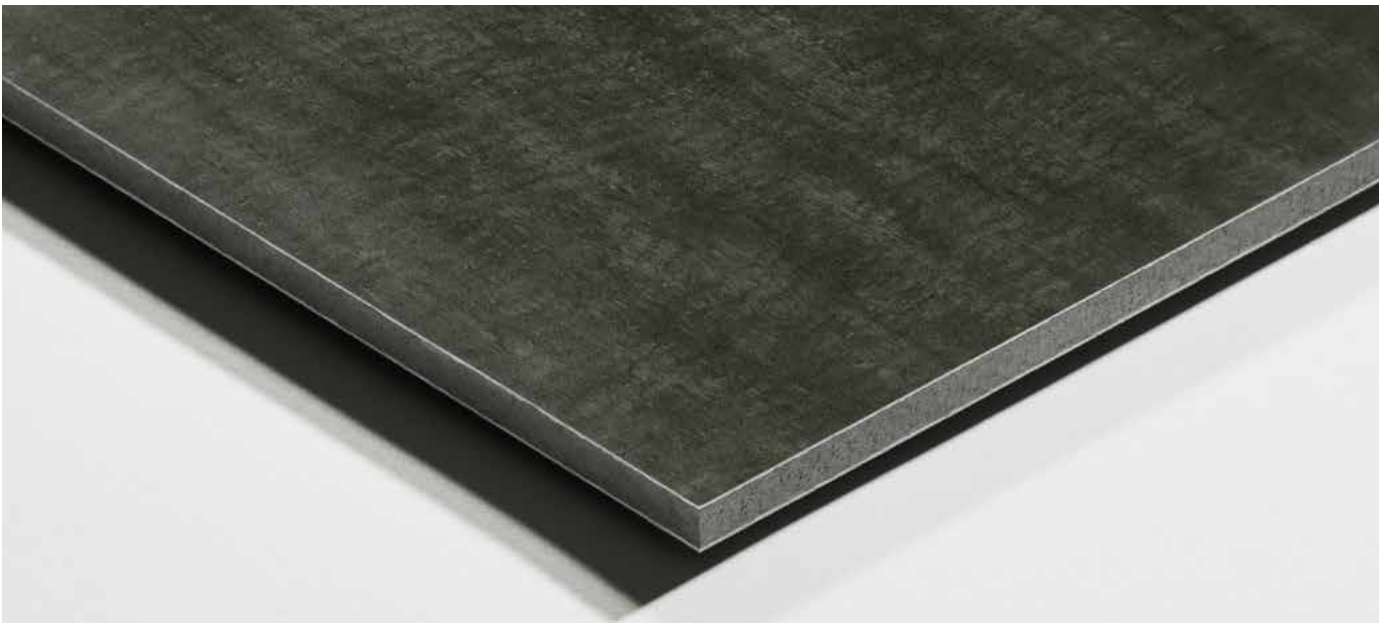
easy to clean



fast assembly



longevity





1 06

1 06 Project: Plaza Central
Bogota, Columbia
Planning: Alfonso Tamayo

Overview of decors Architecture Line and Pure Color

5000 White Avalanche

5001 Ice Silver

5002 Smoke

5003 Charcoal Grey

5110 Ginger

5113 Curcuma

5111 Curry

5032 Cinnamon

5031 Hazel

5030 Truffle

5091 African Clay

5090 Deep Ocean

5092 Blue Mountain

5070 Poseidon

5071 Neptun

Overview of decors

Nature

0125 Natural Oak

5173 Barrique Oak

5172 Marshland Oak

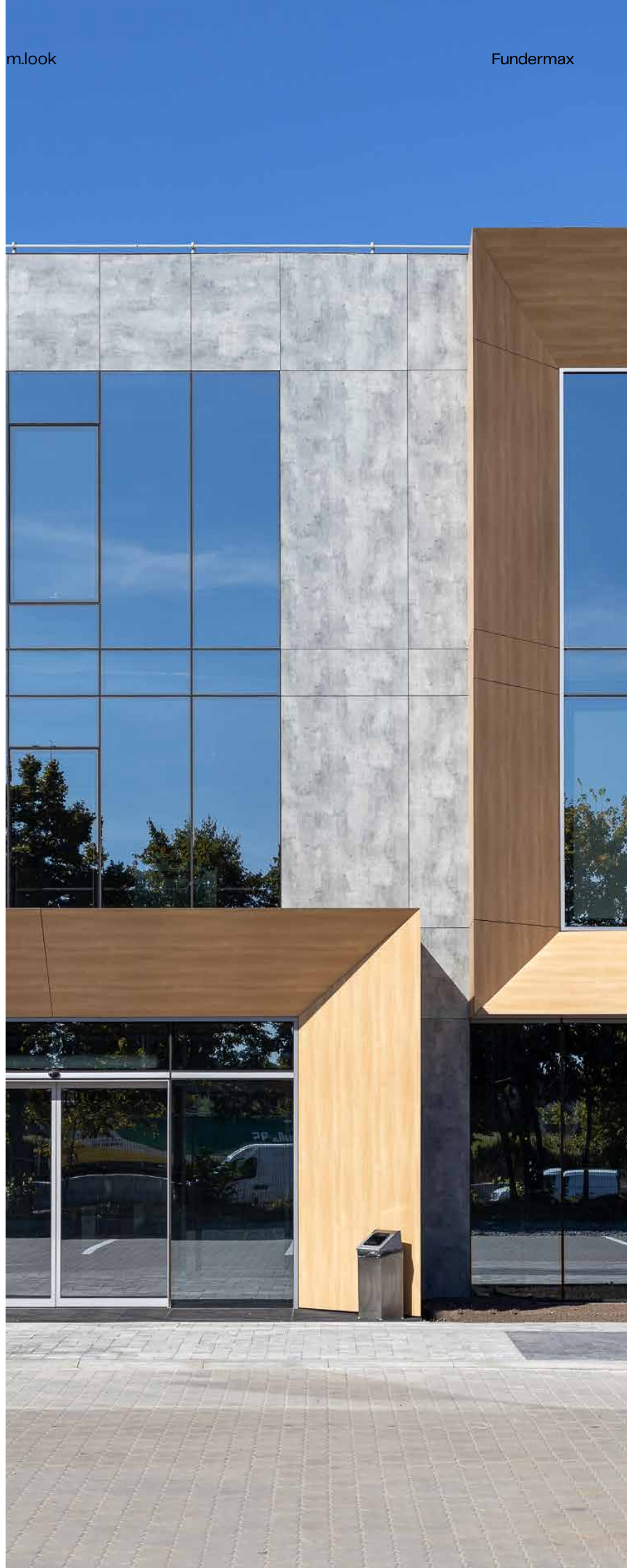
0931 Akro Almond

0161 Light Afro

0932 Akro Terra

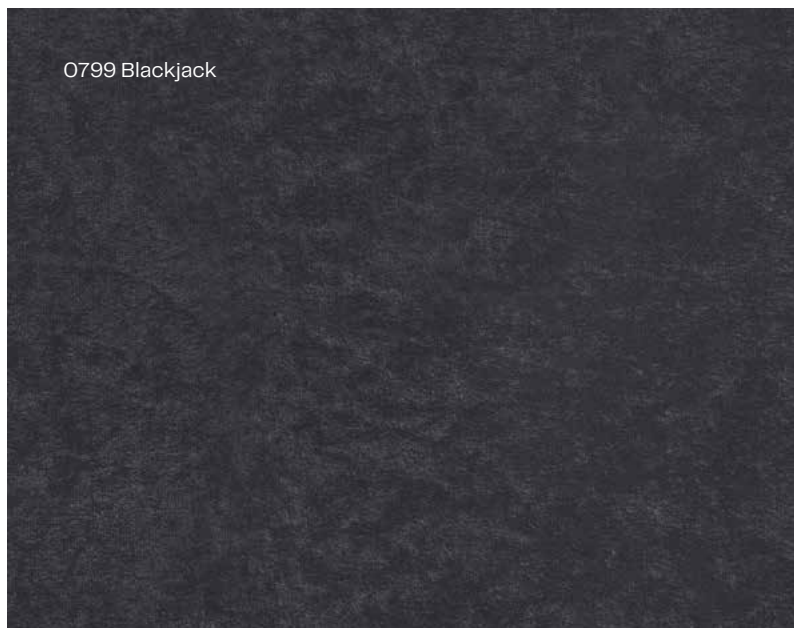
1 07 Project: Volvo Dealer Center
Czechia
Planning: Vlad Gushel

1 07



Overview of decors Material

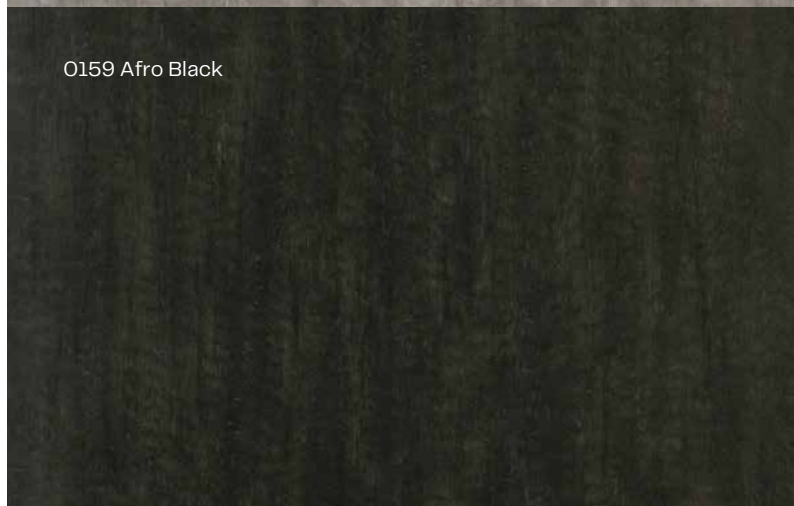
0799 Blackjack



0158 Afro Grey



0159 Afro Black





0798 Tambora



5152 Black Slate



0386 Blues



0497 Stonehenge



5150 Yellowstone



0429 Corro



0427 Skyline



0026 Alu Grey



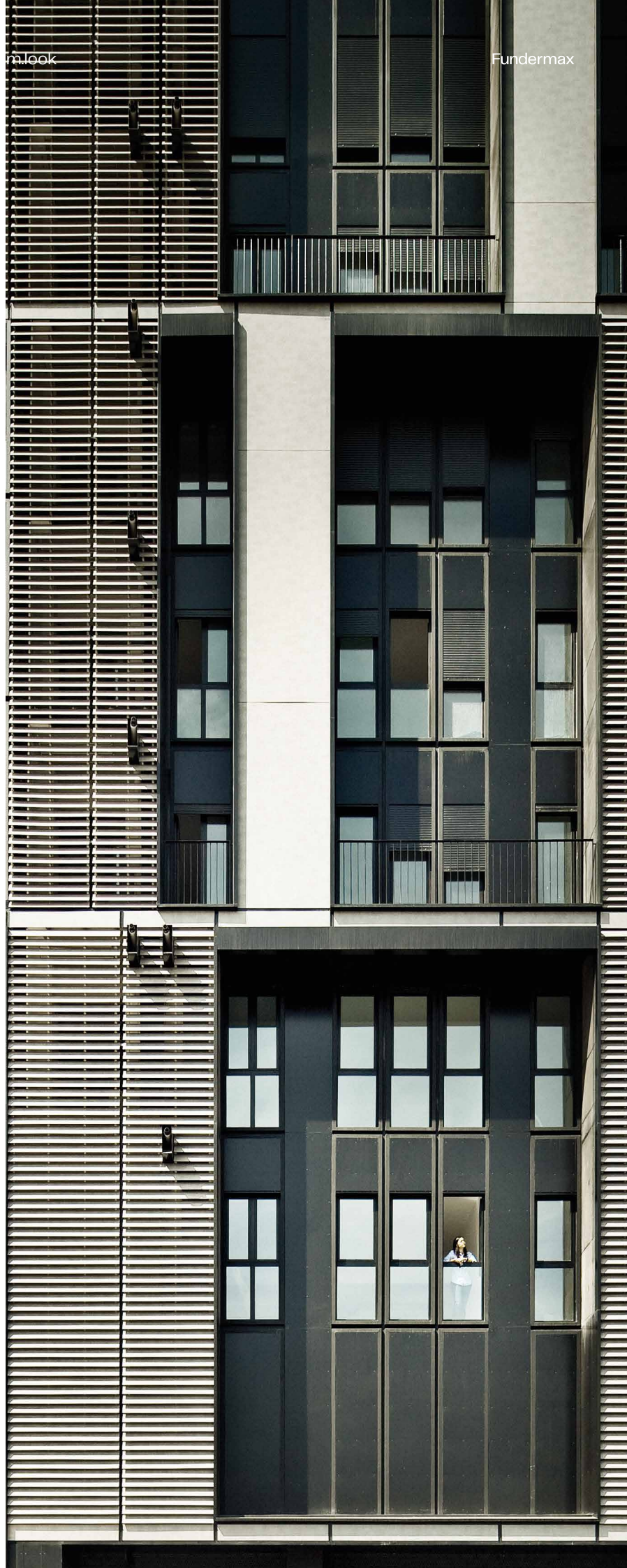
0027 Prado Agate Grey



0426 Loft

1 0 8 Project: Torre Europa
Hospitalet de Llobregat, Spain
Planning: Arquitectura Produccions

1 0 8



Architecture Line

Architecture means offering perspectives and powerfully shaping public perception. m.look uses an extensive colour spectrum to convey the messages of architecture in an independent, un-repeatable form – unique in the building material class A2-s1, d0.



5000 White Avalanche

The elemental power of winter creates an overwhelming impression.

5001 Ice Silver

The glitter of ice turns out to be a fascinating mirror of reality.

Colour deviations to original decors are subject to the printing process.



5002 Smoke

A stylish grey veil as a visual trademark.

5003 Charcoal Grey

A hue born of ancient Earth, with the special appearance of raw coal.

Pure Colour

Diverse m.look colour and design variants create new possibilities for many areas of application and skilfully transfer creative designs into reality.



5110 Ginger

With just the lightest shade of ginger, it is almost white, yet clearly its own distinctive colour.

5113 Curcuma

Beautiful and highly visible in pure culture. Always an eye catcher.

5111 Curry

A wise balance with a bright liveliness and claim to timeless style.



5032 Cinnamon

A colour that you can „smell with your eyes“ so to speak. Cinnamon entices you to take sniff.

5031 Hazel

Drawn with pleasure from the paint bucket of nature. A look that blends warmth and taste.



5030 Truffle

A commitment to pleasure. Only those who appeal to all the senses, can achieve such results.



5091 African Clay

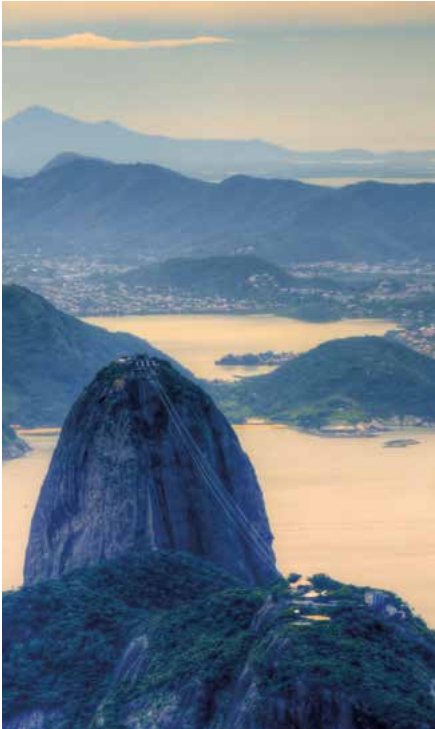
Back to basics. The encounter with earth as the original element.



5090 Deep Ocean

Inspiration drawn from the ocean floor gives insight into a mysterious world.

Colour deviations to original decors are subject to the printing process.



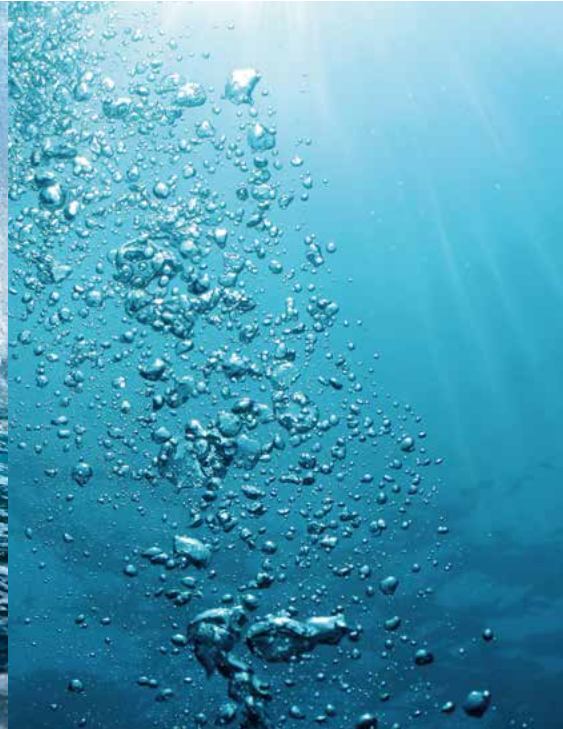
5092 Blue Mountain

The colour of the setting day, when the last light gently covers the mountain peaks.



5070 Poseidon

As intense as the captivating power of the elemental forces.



5071 Neptun

Where the sea is the most beautiful, it is exactly this colour.



Nature

Whichever colours, shapes and structures man composes, the world around us has invented it in one form or another long before.

There is so much to discover, often in the smallest detail. Our Nature decors were created through patient observation and deep understanding of nature. This is why they replicate nature so precisely; at the same time playfully and convincingly.



0125 Natural Oak

A work of art from the wealth of nature that you are sure to love.

5173 Barrique Oak

Matured for beauty!
The impressive result of experience and style.



5172 Marshland Oak

A combination of colors from the forest, marsh and river meadows.



0932 Akro Terra

Earthy and grounded.
Power and passion combine.



Colour deviations to original decors are subject to the printing process.

0931 Akro Almond

The interplay of light and dark creates exquisite shades.

0161 Light Afro

The design in the look of hot desert sand allows the viewer to feel the distance.



0799 Blackjack

Die Kombination aus tiefem Schwarz und subtilen anthrazitfarbenen Variationen.

0798 Tambora

A composition of strong colours that stand for maximum commitment.

0386 Blues

The fusion of deep traditional colours.



Decors that captivate with their simplicity and understatement are captured here. Designs dominated by clarity with a persuasive power that appeals to every one of us.

Pure, natural elements; canyons in an infinite landscape, rock formations of overwhelming power and grandeur: all this and more oozes from these decors. They strike a chord like no other.



0497 Stonehenge

Ancient forms and colours.
New and exciting interpretations.



5150 Yellowstone

Firmly rooted and inspired
by the extremes of our nature.



5152 Black Slate

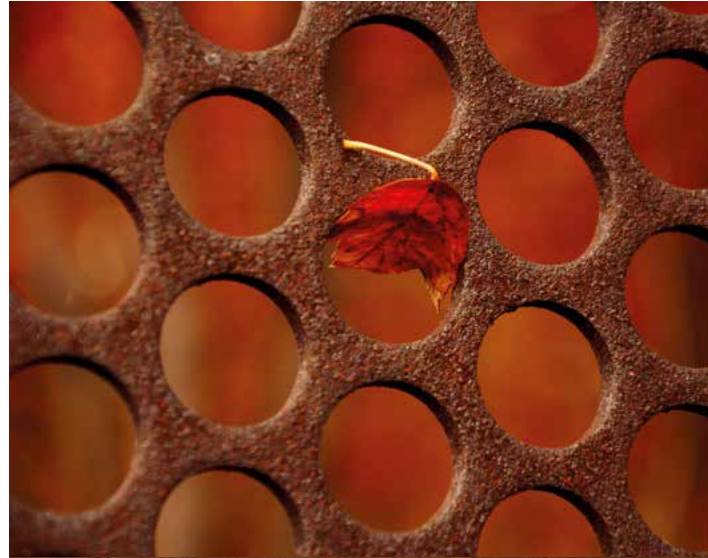
Fragments of granite serve
to inspire a stylish decor.





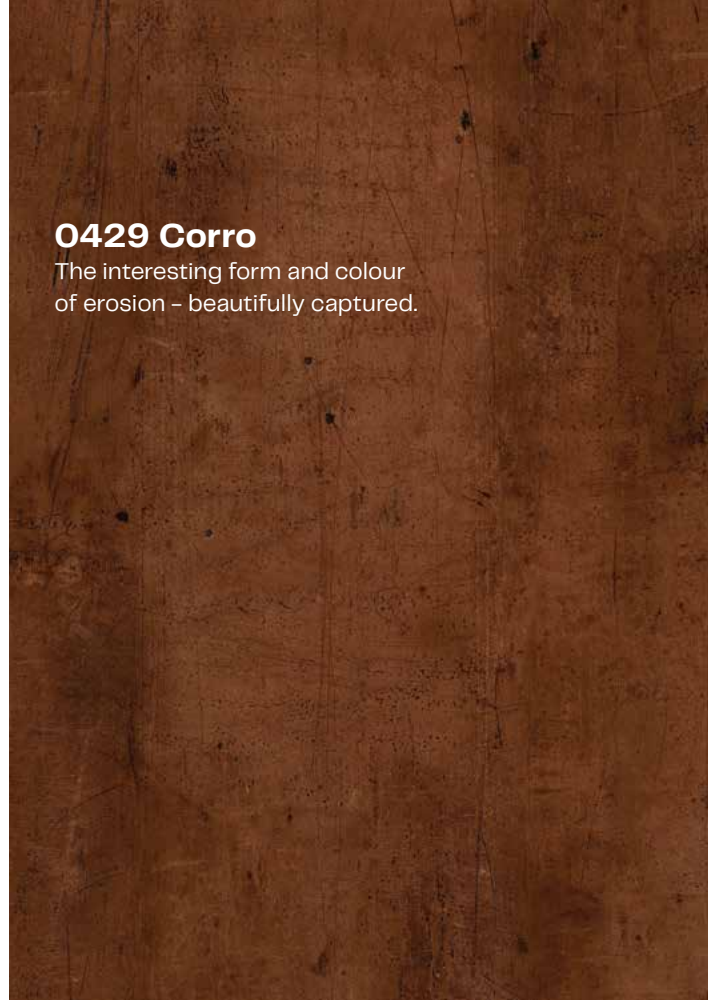
1 10

1 10 Project: High school Liefering Austria
Liefering, Austria
Planning: Architect DI Johannes Schallhammer



0429 Corro

The interesting form and colour
of erosion - beautifully captured.



Colour deviations to original decors are subject to the printing process.



0426 Loft

A character full of breadth and freedom. Lively yet reserved.

0427 Skyline

The concrete look is taken to its highest form here and presents the beauty of the underappreciated.

111 Project: Mehrparteienhaus
Hospitalet de Llobregat, Spain
Planning: Roldán & Berenguer

111

Colour deviations to original decors are subject to the printing process.

0026 Prado Alu Grey

A spectacular composition in grey that affords boundless spaces as far as the eye can see.

0027 Prado Agate Grey

Harmonious surface,
without restriction.

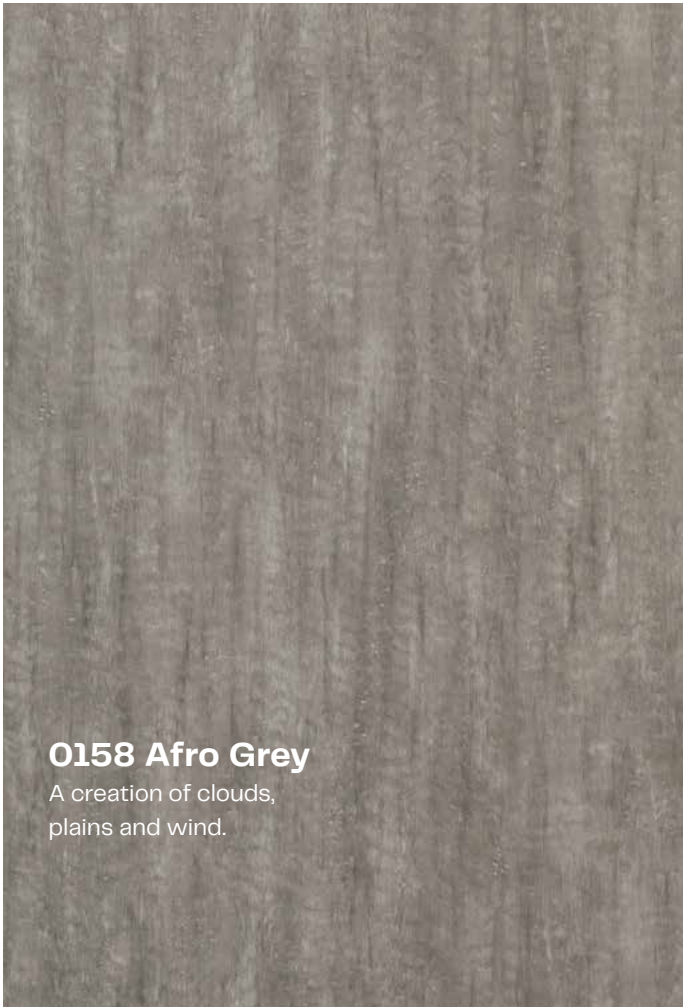






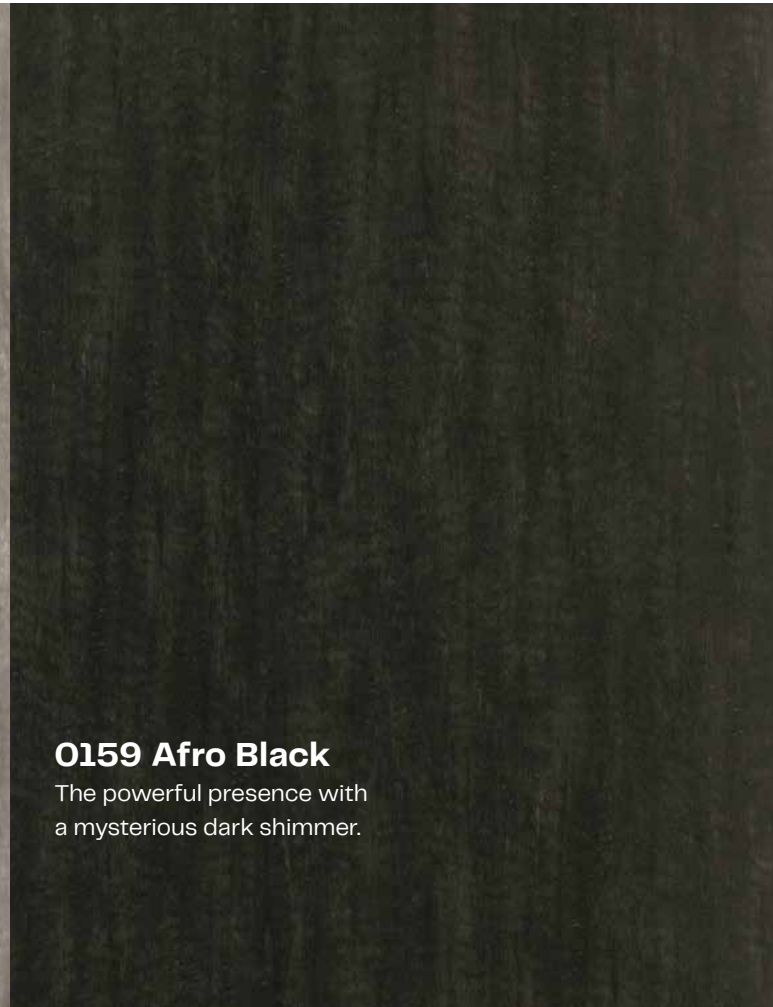
112 Project: Ferienhaus Galitsiya
Czechia
Photographer: Elena Lasunova

Colour deviations to original decors are subject to the printing process.



0158 Afro Grey

A creation of clouds,
plains and wind.



0159 Afro Black

The powerful presence with
a mysterious dark shimmer.



Fundermax Deutschland GmbH

Mundenheimer Weg 2
D-67117 Limburgerhof
infogermany@fundermax.biz
www.fundermax.com

Fundermax France S.a.r.l.

3 Cours Albert Thomas
F-69003 Lyon
T +33 (0)4 78 68 28 31
infofrance@fundermax.biz
www.fundermax.com

Fundermax India Pvt. Ltd.

Sy. No. 7, Honnenahalli, Doddballapur Road,
IND-Yelahanka Hobli, Bangalore - 560064
T +96113 99211
officeindia@fundermax.biz
www.fundermax.in

Fundermax Italia s.r.l.

Viale Venezia 22
I-33052 Cervignano del Friuli
infoitaly@fundermax.biz
www.fundermax.com

Fundermax North America, Inc.

9401-P Southern Pine Blvd.
Charlotte, NC 28273, U.S.
T +1 980 299 0035
office.america@fundermax.biz
www.fundermax.us

Fundermax Polska Sp. z o.o.

ul. Rybitwy 12
PL-30-722 Kraków
T +48 (0)12 65 34 528
infopoland@fundermax.biz

Fundermax Swiss AG

Industriestrasse 38
CH-5314 Kleindöttingen
T +41 (0)56 268 83 11
infoswiss@fundermax.biz
www.fundermax.com

Fundermax GmbH

Klagenfurter Straße 87-89, A-9300 St. Veit/Glan
T: +43 (0)5 9494-0, F: +43 (0)5 9494-4200
office@fundermax.at
www.fundermax.com

