

# Max Compact Interior Plus



For you to create



# Fundermax

[www.fundermax.com](http://www.fundermax.com)



**The surface  
with the plus.**



## Contens

Max Compact Interior Plus	4
Collection	6
Delivery programme	9

## **Fundermax**

No matter whether it's furniture, facades, or interior design: where ideas and materials meet, you'll find Fundermax. As a global market leader in the field of compact panels and a manufacturer of high-quality wood-based materials and laminates, the company is proud to look back on a history spanning 130 years. The continued success is based on the highest quality, innovative and varied design, and sustainable production. Made in Austria—with great love for wood as a natural material, creations, and imagination.

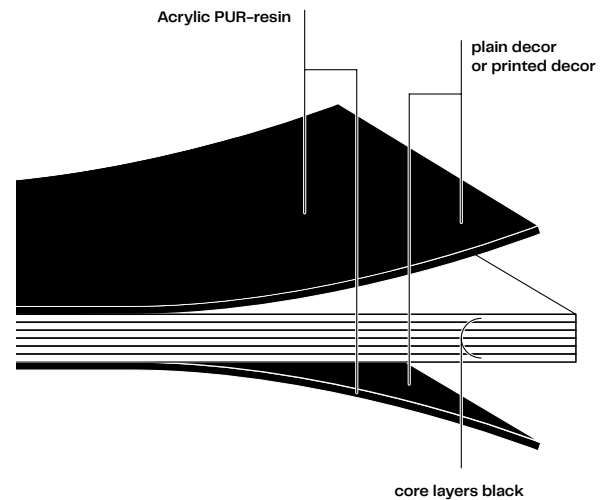
- modern production facilities in Austria and Norway
- around 1,500 employees
- annual sales of €500 million
- part of Constantia Industries AG
- The Austrian Excellence Award (2018)

# 1 Max Compact Interior Plus

## The best laminate for superior interior finishes

Max Compact IP are high pressure laminates (HPL) manufactured to standard EN 438-4 Type CGS for demanding applications (e. g. office furniture, wall cladding, wet rooms, etc.) with a double-hardened, pore-free surface sealed with urethane acrylate for applications in heavily frequented areas with higher cleaning or hygiene requirements, such as in hospitals, schools, kindergartens, sanitary rooms in hotels and in public areas or buildings with occasionally increased risk of infection (airports, train stations), industrial kitchens and public transport.

Even especially at largely frequented rooms the Max Compact Laminates pays off. Because pollution and graffiti are removed free of residues. Test series approve: Max Compact Interior Plus has excellent disinfecting and hygienic properties. Even aggressive cleaners are unable to harm it. Due to the double hardened closed surface of Interior Plus, it shows a stand alone resistance against environmental influence.



### Disinfectant properties

Due to its outstandingly surface Max Compact Panels Interior Plus are easy to clean and easy to disinfect also, like e.g. stainless steel or operating room tiles.

### Cleaning

Max Compact panels not only score with their decorative properties. Reduced cleaning expenses help saving costs and Max Compact panels look brand-new again even after heavy contamination.

Physical Data	Test method	Actual value
Density	EN 438	≥ 1,35 g/cm <sup>3</sup>
Optical properties	Test method	Actual value
Light-fastness (Greyscale)	EN 438	≥ 4
Water vapour diffusion resistance	EN 438	≥ 4
Mechanical properties	Test method	Actual value
Flexural strength	EN 438	≥ 80 MPa
Modulus of elasticity	EN 438	≥ 9000 MPa
Tensile strength	EN 438	≥ 60 MPa
Fire behaviour	EN 13501-1	on request in F-Quality B-s2, d0
Scratch resistance		degree ≥ 3,5 ≥ 4 N
Chemical resistance		not depending on colour (24 h Test) All solvents Hydrochloric acid 10% Phosphoric acid 10% Acetic 10% Sodium hypochlorite 13% Soda lye 25% Ammonia 25%

**Applications**

- hospitals, nursing homes
- areas with high hygienic demands
- school buildings, kindergarten
- public swimming baths, sauna
- sanitary rooms in hotels and in the public
- buildings with occasionally higher infection risk (airports, railway stations)
- canteen kitchens, foodstuff industry
- public traffic

**Advantages of Interior Plus**

- dense surface
- easy to disinfect
- durable
- stable
- easy to clean
- easy to clean from limescale
- highly resistant
- many formats
- many decors

Practically all areas where aggressive or acid cleaners (eg. cleaning agents, descaler) are used often for cleaning and where a durable hygienic dense surface is required.



## 2 Kollektion

Pulsating colours, rough urbanity or impressive naturalness: thanks to its large decor variety the Max Compact IP range of decors opens up all possibilities.

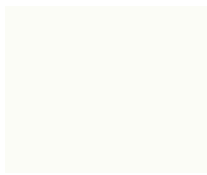
### Colour



0080



0091



0085



0753



0776



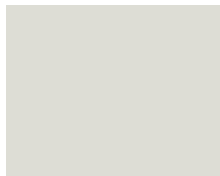
0070



0900



0762



1203



0074



0075



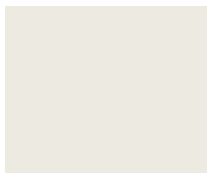
0077



0747



0741



0742



0071



2206



0887



0875



0657



0153



2289



0144



0768



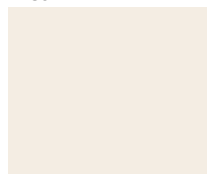
0845



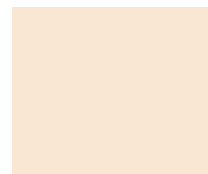
0098



0081



0733



0651



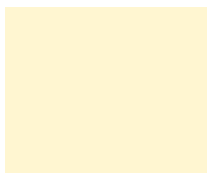
0627



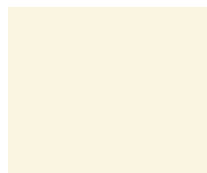
0864



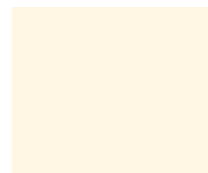
0654



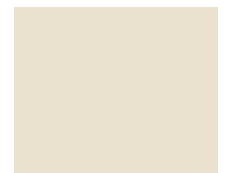
0065



0073



0851



0066



0865



0647



0687



0736



5032



0873



3007



0680



0020



0661



0691



0874



3003



0689



0674



0717



0237



0702



0631



0617



0056



0706



0703



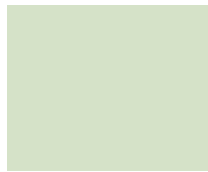
0712



0059



0662



0663



0592



0849



0623



0725



0850



0591

# Nature



0907



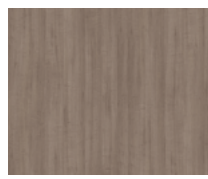
0908



0925



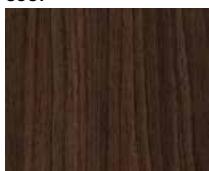
0801



0936



5172



0901



0824



0932



0909



0847



0869



0870



5173



0846



0935



0919



0820



5171



0868



0923



0125



0931



0927



0169



0168



0601



0803



0922



0924



0160



0161



0162

# Material



0496



0421



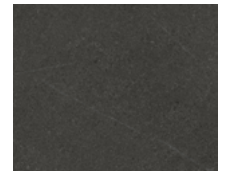
0426



0394



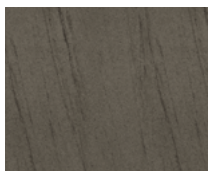
0497



0861



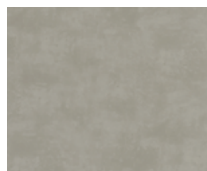
0805



0406



0808



0026



0793



0027



0429



0028



0794



0603



0798



0386



0158



0894



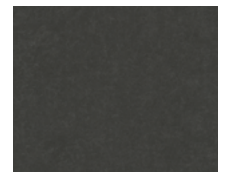
0428



0159



0804



0799



0903



0902



0898



0897



0427



0860



# Delivery programme

				Product	Interior Plus				
				Format (mm)	2800 x 1300 (GR)	4100 x 1300 (JU)	2800 x 1854 (SP)	4100 x 1854 (XL)	3670 x 1630 (OF)
				Surface	IP				
				Thickness (mm)	2   3   4   6   8   10   12   13   16   18   20 (SP 2800 x 1854 only possible up to 15mm)				
				Core	black black F-Quality				
Decor type	Decor no.	Decor name	Wood type / Nearest NCS Code	*These decors are only available up to a maximum thickness of 13mm.					
U	0020	Ballerina	S 3020-Y90R	○	○	○	○	○	
M	0026	Prado Alu Grey		○	○	○	○	○	
M	0027	Prado Agate Grey		○	○	○	○	○	
M	0028	Prado Brown		○	○	○	○	○	
U	0056	Atlantis	S 3040-B40G	○	○	○	○	○	
U	0059	Dark Green	S 5020-G	○	○	○	○	○	
U	0065	Ivory	S 0510-Y20R	○	○	○	○	○	
U	0066	Sand	S 1505-Y20R	○	○	○	○	○	
U	0070	Carbon Grey	S 7502-B	○	○	○	○	○	
U	0071	Fresco	S 2005-Y50R	○	○	○	○	○	
U	0073	Pale Ivory	S 0505-G90Y	○	○	○	○	○	
U	0074	Pastel Grey	S 2500-N	○	○	○	○	○	
U	0075	Dark Grey	S 5000-N	○	○	○	○	○	
U	0077	Charcoal	S 7502-R	○	○	○	○	○	
U	0080	Black	S 9000-N	○	○	○	○	○	
U	0081	Alpaca	S 2010-Y20R	○	○	○	○	○	
U	0085	White	S 0502-G50Y	○	○	○	○	○	
U	0091	Starlight	S 0502-R50B	○	○	○	○	○	
U	0098	Mandola	S 3010-Y20R	○	○	○	○	○	
H	0125	Natural Oak	Oak	○	○	○	○	○	
U	0144	Costa	S 3005-Y20R	○	○	○	○	○	
U	0153	Burano	S 6010-Y30R	○	○	○	○	○	
M	0158	Akro Grey	Bamboo	○	○	○	○	○	
M	0159	Akro Black	Bamboo	○	○	○	○	○	
H	0160	Dark Akro	Bamboo	○	○	○	○	○	
H	0161	Light Akro	Bamboo	○	○	○	○	○	
H	0162	Akro Sahara	Bamboo	○	○	○	○	○	
H	0168	Akro Rust	Bamboo	○	○	○	○	○	
H	0169	Akro Ruby	Bamboo	○	○	○	○	○	
U	0237	Gentian Blue	S 5040-R80B	○	○	○	○	○	
M	0386	Blues		○	○	○	○	○	
M	0394	Moonwalk		○	○	○	○	○	
M	0406	Rockstar		○	○	○	○	○	
M	0421*	Venus*		○	○	○	○	○	
M	0426	Loft		○	○	○	○	○	
M	0427	Skyline		○	○	○	○	○	
M	0428*	Cave*		○	○	○	○	○	
M	0429	Corro		○	○	○	○	○	
M	0496*	Colosseum*		○	○	○	○	○	
M	0497	Stonehenge		○	○	○	○	○	
U	0591	Fir Green	S 7020-B90G	○	○	○	○	○	
U	0592	Kiwi Green	S 1015-G40Y	○	○	○	○	○	
H	0601	Sun Pear	Pear	○	○	○	○	○	
M	0603	Ardens		○	○	○	○	○	

**Decor type**

H = Nature  
M = Material  
U = Colour

**Delivery options**

○ = according to current delivery times

**Formats:**

Tolerances +10-0 mm; Panel formats are production formats. If exact dimensions and angles are necessary, we recommend an all-sided blank. Depending on the method of trimming, net size is reduced by ca. 10 mm.

				Product	Interior Plus				
				Format (mm)	2800 x 1300 (GR)	4100 x 1300 (JU)	2800 x 1854 (SP)	4100 x 1854 (XL)	3670 x 1630 (OF)
				Surface	IP				
				Thickness (mm)	2   3   4   6   8   10   12   13   16   18   20 (SP 2800 x 1854 only possible up to 15mm)				
				Core	black black F-Quality				
Decor type	Decor no.	Decor name	Wood type / Nearest NCS Code	*These decors are only available up to a maximum thickness of 13mm.					
U	0617	Petrol Green	S 6020-B30G	o	o	o	o	o	o
U	0623	Green	S 4040-G10Y	o	o	o	o	o	o
U	0627	Hygienic Beige	S 2010-Y40R	o	o	o	o	o	o
U	0631	Turquoise	S 6020-B10G	o	o	o	o	o	o
U	0645	Tobacco	S 4020-Y30R	o	o	o	o	o	o
U	0647	Golden Yellow	S 1050-Y10R	o	o	o	o	o	o
U	0651	Cream	S 0907-Y50R	o	o	o	o	o	o
U	0654	Jasmin	S 1515-Y20R	o	o	o	o	o	o
U	0657	Sepia Brown	S 8010-Y50R	o	o	o	o	o	o
U	0661	Terracotta	S 4040-Y80R	o	o	o	o	o	o
U	0662	Jade Green	S 4010-G30Y	o	o	o	o	o	o
U	0663	Reseda Green	S 1510-G20Y	o	o	o	o	o	o
U	0674	Mars Red	S 1580-Y90R	o	o	o	o	o	o
U	0680	Wine Red	S 5040-R10B	o	o	o	o	o	o
U	0687	Maize	S 0520-Y20R	o	o	o	o	o	o
U	0689	Dark Red	S 2570-Y80R	o	o	o	o	o	o
U	0691	Purple	S 5040-Y90R	o	o	o	o	o	o
U	0702	Night Blue	S 8010-R70B	o	o	o	o	o	o
U	0703	Dove Blue	S 3020-B10G	o	o	o	o	o	o
U	0706	Glacier Blue	S 2010-B	o	o	o	o	o	o
U	0712	Steel Blue	S 4030-B	o	o	o	o	o	o
U	0717	Atlantic	S 2060-R90B	o	o	o	o	o	o
U	0725	Yellowish Green	S 1060-G60Y	o	o	o	o	o	o
U	0733	Hygienic White	S 0804-Y30R	o	o	o	o	o	o
U	0736	Saffron	S 1050-Y20R	o	o	o	o	o	o
U	0741	Birch Grey	S 2002-G50Y	o	o	o	o	o	o
U	0742	Pebble Grey	S 1002-Y	o	o	o	o	o	o
U	0747	Medium Grey	S 4502-Y	o	o	o	o	o	o
U	0753	Cool Grey Medium	S 3502-B	o	o	o	o	o	o
U	0762	Neutral Grey Medium	S 4000-N	o	o	o	o	o	o
U	0768	Sparrow	S 6005-Y20R	o	o	o	o	o	o
U	0776	Concrete Grey	S 4005-B20G	o	o	o	o	o	o
M	0793*	Patina Tin*		o	o	o	o	o	o
M	0794*	Patina Bronze*		o	o	o	o	o	o
M	0798	Tambora		o	o	o	o	o	o
M	0799	Black Jack		o	o	o	o	o	o
H	0801*	Fir Platinum*	Fir	o	o	o	o	o	o
H	0803*	Tyrol Pine*	Pine	o	o	o	o	o	o
M	0804	Metropolis		o	o	o	o	o	o
M	0805	Cosmopolis		o	o	o	o	o	o
M	0808	Desert Rose Sandstone		o	o	o	o	o	o
H	0820	Hazel Heritage Oak	Oak	o	o	o	o	o	o
H	0824	Brown Bistro Oak	Oak	o	o	o	o	o	o
H	0846	Caramel Jazz Oak	Oak	o	o	o	o	o	o

**Dekor type**  
H = Nature  
M = Material  
U = Colour

**Delivery options**  
o = according to current delivery times

**Formats:**

Tolerances +10-0 mm; Panel formats are production formats. If exact dimensions and angles are necessary, we recommend an all-sided blank. Depending on the method of trimming, net size is reduced by ca. 10 mm.

			Product	Interior Plus				
			Format (mm)	2800 x 1300 (GR)	4100 x 1300 (JU)	2800 x 1854 (SP)	4100 x 1854 (XL)	3670 x 1630 (OF)
			Surface	IP				
			Thickness (mm)	2   3   4   6   8   10   12   13   16   18   20 (SP 2800 x 1854 only possible up to 15mm)				
			Core	black black F-Quality				
Decor type	Decor no.	Decor name	Wood type / Nearest NCS Code	*These decors are only available up to a maximum thickness of 13mm.				
H	0847	Smoked Jazz Oak	Oak	○	○	○	○	○
U	0849	Frosted Green	S 3020-G30Y	○	○	○	○	○
U	0850	Green Valley	S 4050-G30Y	○	○	○	○	○
U	0851	Winter White	S 0505-Y30R	○	○	○	○	○
M	0860	White Blizzard Quartzstone		○	○	○	○	○
M	0861	Grey Eclipse Quartzstone		○	○	○	○	○
U	0864	Mustard	S 2060-Y10R	○	○	○	○	○
U	0865	Lemon	S 0580-Y	○	○	○	○	○
H	0868	Caramel Marvel Walnut	Walnut	○	○	○	○	○
H	0869	Smoked Marvel Walnut	Walnut	○	○	○	○	○
H	0870	Dark Honey Marvel Walnut	Walnut	○	○	○	○	○
U	0873	Red Pepper	S 4550-Y70R	○	○	○	○	○
U	0874	Maroon	S 7020-Y90R	○	○	○	○	○
U	0875	Chocolate Brownie	S 8010-Y90R	○	○	○	○	○
U	0887	Dark Offroad Greige	S 7005-Y20R	○	○	○	○	○
M	0894	Black Pearl Concrete		○	○	○	○	○
M	0897	Grey Cliffhanger Slate		○	○	○	○	○
M	0898	Porto Nero Slate		○	○	○	○	○
U	0900	Dark Cyber Grey	S 7500-N	○	○	○	○	○
H	0901	Dark Rainbow Rosewood	Exotic	○	○	○	○	○
M	0902	Black Stingray Limestone		○	○	○	○	○
M	0903	Urban Galaxy Limestone		○	○	○	○	○
H	0907	Graphite Flagship Oak	Oak	○	○	○	○	○
H	0908	Grey Flagship Oak	Oak	○	○	○	○	○
H	0909	Brown Flagship Oak	Oak	○	○	○	○	○
H	0919*	Ecuador*	Exotic	○	○	○	○	○
H	0922	Amazon	Exotic	○	○	○	○	○
H	0923*	Enigma Oak*	Oak	○	○	○	○	○
H	0924	Taurus Oak	Oak	○	○	○	○	○
H	0925*	Butterfly Hickory*	Walnut	○	○	○	○	○
H	0927	Creek Larch	Larch	○	○	○	○	○
H	0931	Akro Almond	Bamboo	○	○	○	○	○
H	0932	Akro Terra	Bamboo	○	○	○	○	○
H	0935*	Voyager Oak*	Oak	○	○	○	○	○
H	0936*	Thunder Maple*	Maple	○	○	○	○	○
U	1203	Grey	S 2000-N*	○	○	○	○	○
U	2206	Fango	S 4005-Y50R	○	○	○	○	○
U	2289	Tortora	S 1505-Y40R	○	○	○	○	○
U	3003	Rubinus Red	S 2570-R	○	○	○	○	○
U	3007	Black Red	S 8010-R10B	○	○	○	○	○
U	5032	Cinnamon	S 3560-Y30R	○	○	○	○	○
H	5171	Polar Oak	Oak	○	○	○	○	○
H	5172	Marshland Oak	Oak	○	○	○	○	○
H	5173	Barrique Oak	Oak	○	○	○	○	○

**Decor type**

H = Nature  
M = Material  
U = Colour

**Delivery options**

○ = according to current delivery times

**Formats:**

Tolerances +10-0 mm; Panel formats are production formats. If exact dimensions and angles are necessary, we recommend an all-sided blank. Depending on the method of trimming, net size is reduced by ca. 10 mm.

**Fundermax Deutschland GmbH**

Mundenheimer Weg 2  
D-67117 Limburgerhof  
infogermany@fundermax.biz  
www.fundermax.com

**Fundermax France S.a.r.l.**

3 Cours Albert Thomas  
F-69003 Lyon  
T +33 (0)4 78 68 28 31  
infofrance@fundermax.biz  
www.fundermax.com

**Fundermax India Pvt. Ltd.**

Sy. No. 7, Honnenahalli, Doddballapur Road,  
IND-Yelahanka Hobli, Bangalore - 560064  
T +96113 99211  
officeindia@fundermax.biz  
www.fundermax.in

**Fundermax Italia s.r.l.**

Viale Venezia 22  
I-33052 Cervignano del Friuli  
infoitaly@fundermax.biz  
www.fundermax.com

**Fundermax North America, Inc.**

9401-P Southern Pine Blvd.  
Charlotte, NC 28273, U.S.  
T +1 980 299 0035  
office.america@fundermax.biz  
www.fundermax.us

**Fundermax Polska Sp. z o.o.**

ul. Rybitwy 12  
PL-30-722 Kraków  
T +48 (0)12 65 34 528  
infopoland@fundermax.biz

**Fundermax Swiss AG**

Industriestrasse 38  
CH-5314 Kleindöttingen  
T +41 (0)56 268 83 11  
infoswiss@fundermax.biz  
www.fundermax.com

**Fundermax GmbH**

Klagenfurter Straße 87-89, A-9300 St. Veit/Glan  
T: +43 (0)5 9494-0, F: +43 (0)5 9494-4200  
office@fundermax.at  
www.fundermax.com

