



m.look NCore

INTERIOR IMPACT 4x5 SYSTEM
FOR WALL LINING

interior

for
people
who
create

m.look NCore impact 4x5 system wall protection

Whether designing for public buildings or private commercial facilities FunderMax offers a wide range of design possibilities. The m.look system wall protection provides decorative and aesthetically appealing wall lining solutions that provide a concealed fastened attachment at an attractive cost on the wall.

The m.look impact 7 system provides a mechanically concealed screw-fastened attachment to drywall or other substrate materials. The panel may be attached directly to the drywall. The screw connection is covered by a 2 mm thick matching material washer.

System thickness: 7 mm



M.LOOK NCORE PANEL BENEFITS

- Noncombustible per ASTM E136
- Flame Spread of 0, Smoke Development 10 as tested per ASTM E84
- m.look panels with high-strength glass-fiber reinforced core and highly resistant decorative HPL surfaces in accordance with DIN EN 438
- Concealed mechanically fastened with metal exterior corner profiles
- Scratch-resistant, moisture-resistant, heat-resistant, frost-resistant, dimensionally stable
- Impact resistant in the system (for example: collisions with beds, cleaning trolleys, etc.)
- Easy disinfecting and cleaning of surfaces
- Exceptional UV and chemical resistance
- Permanently anti-graffiti coated



DECORS

All decors of the Max Compact Exterior Range of Decors are available.

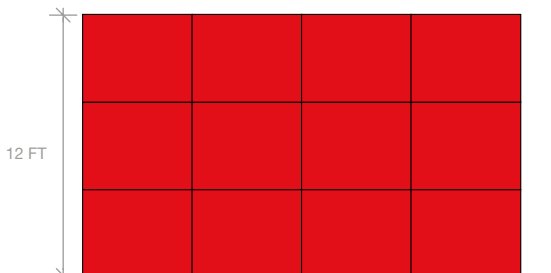
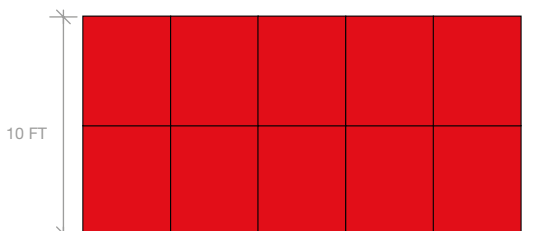
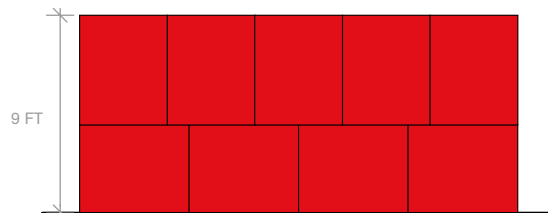
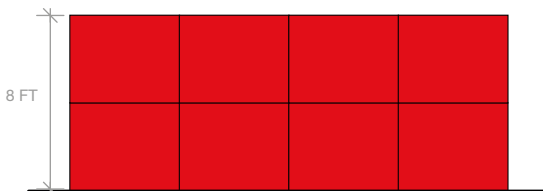
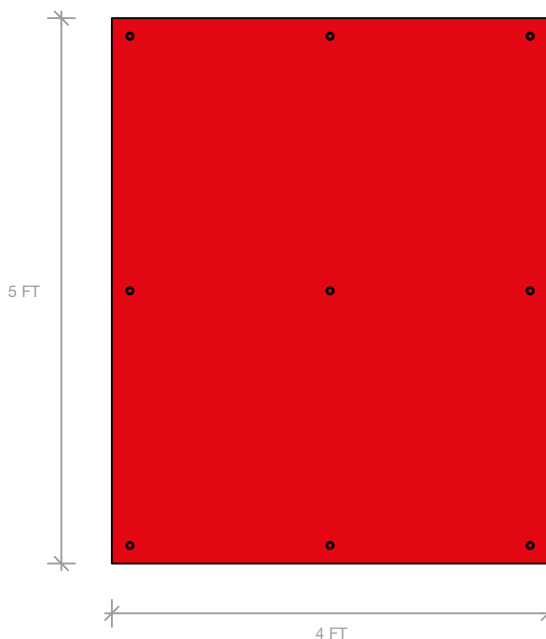
SLIGHT DEVIATIONS IN COLOR ARE DUE TO THE PRINTING PROCESS.

Panel sizes and layout options

One standard size - many options:

4 ft x 5 ft can be combined and oriented horizontally or vertically to accommodate full wall heights.

8 ft, 9 ft, 10 ft, 12 ft and many more full wall heights are achievable by combining and rotating standard panel sizes.



Customized panel sizes:

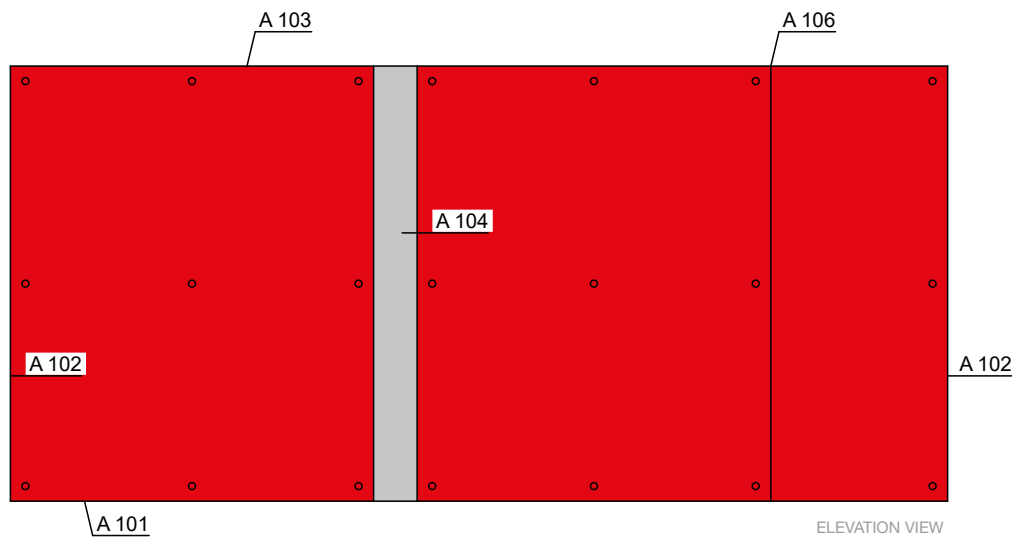
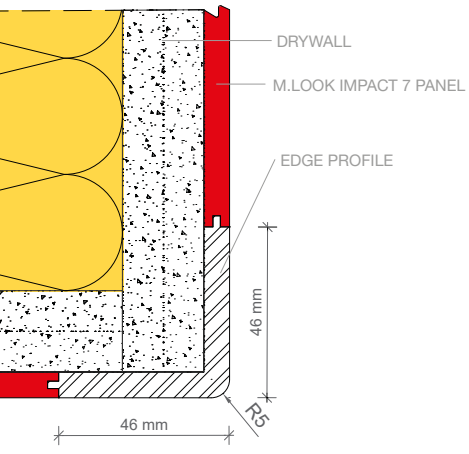
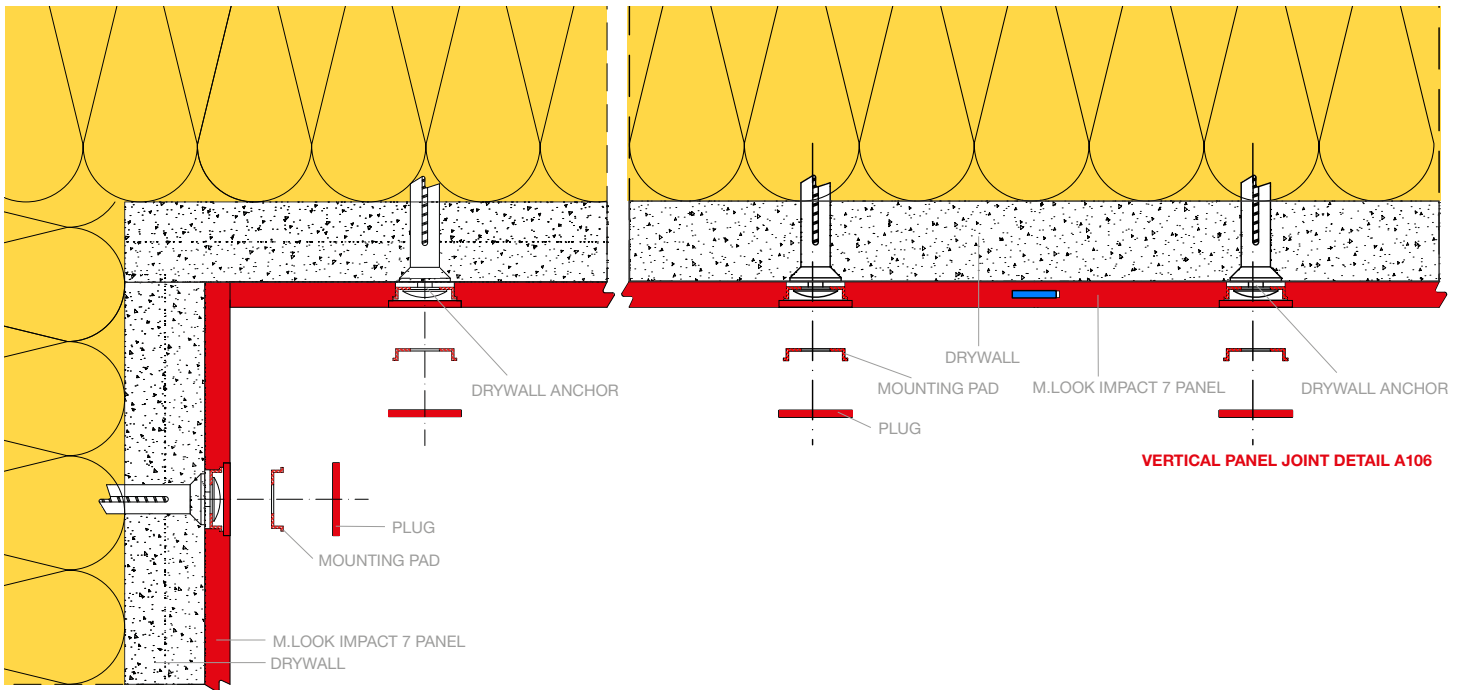
All sizes bigger than 4 ft x 5 ft

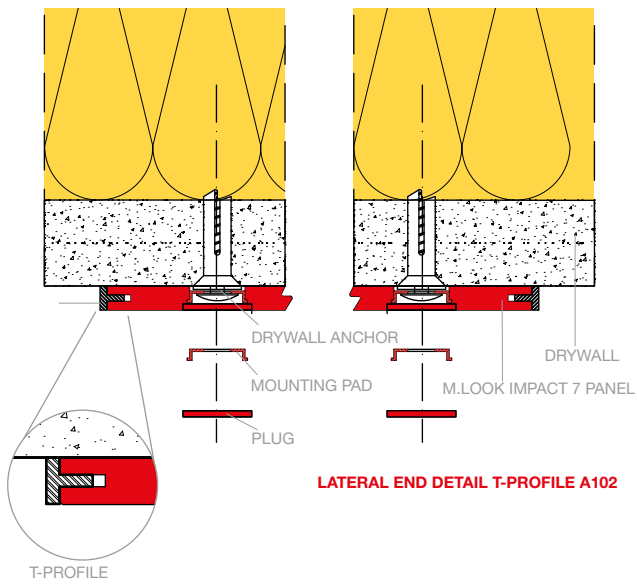
Maximum size: height 143"
and length 63"

Send us your requirement, using our form.
You will receive the wall protection ready
for installation.

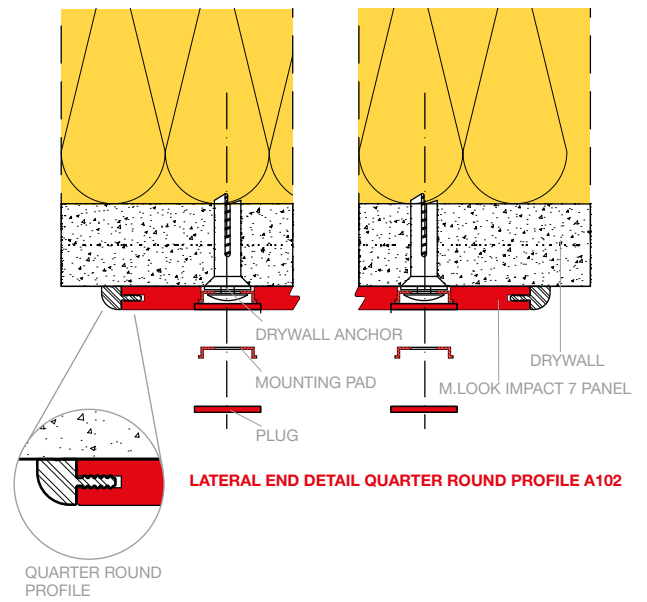


Construction details

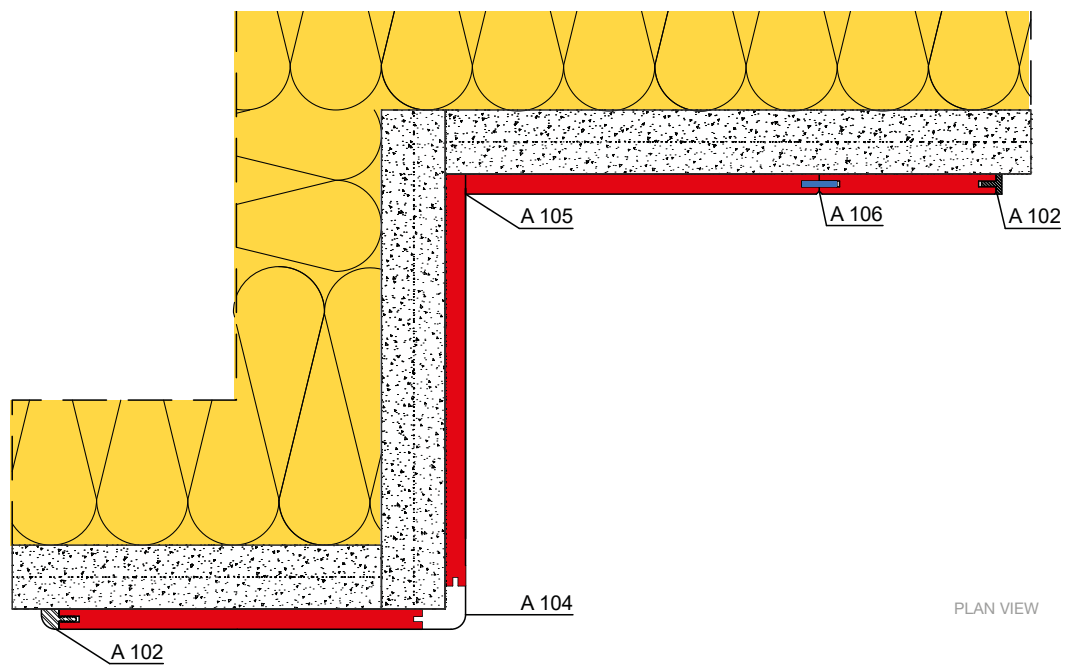


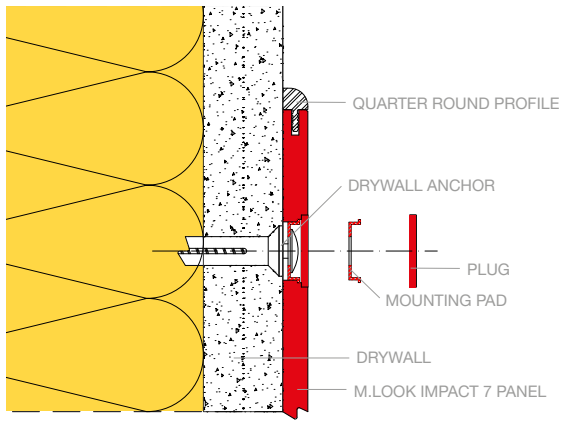


LATERAL END DETAIL T-PROFILE A102

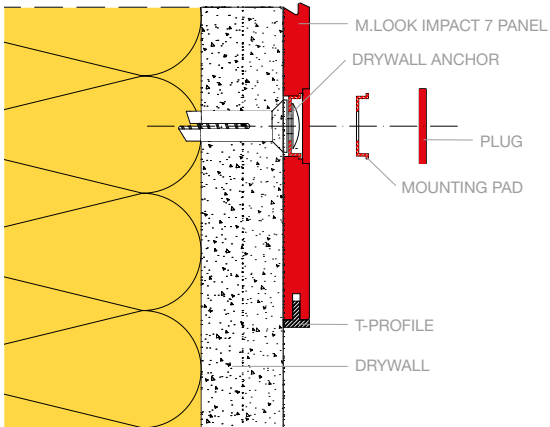


LATERAL END DETAIL QUARTER ROUND PROFILE A102





TOP OF WALL PROTECTION A103



BASE OF WALL PROTECTION A101



Installation



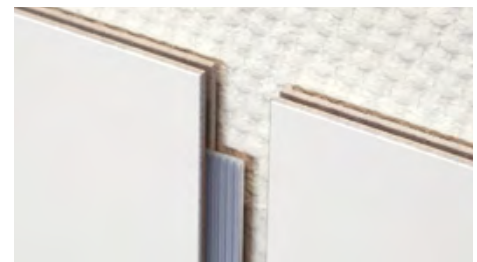
TOP OF WALL - CORNER DETAIL



1. SCREW CONNECTION



4. ... PRESS LIGHTLY



TOP OF WALL



2. GLUE POINT



5. TAP FLUSH



3. COVER ...



6. REMOVE ADHESIVE RESIDUE



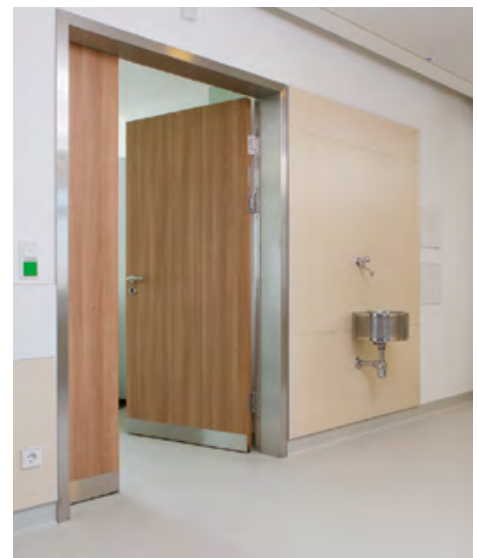
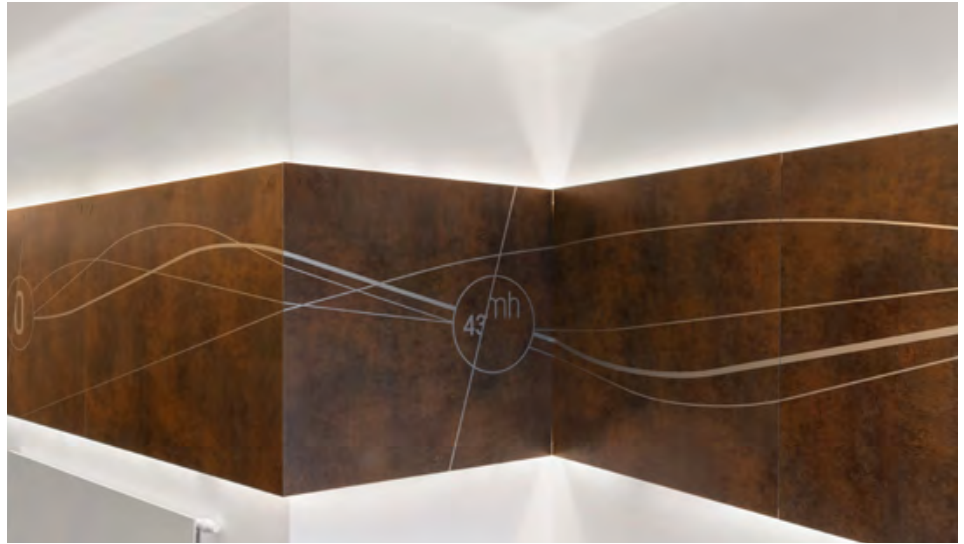
Connecting the panels with external spline and cover strip as finish. The cover strip is glued at points.

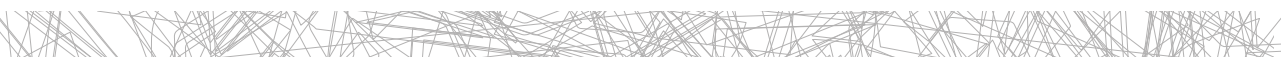
ACCESSORIES

- drywall anchors
- screws
- washers
- wood block
- glue
- cloth and silicone remover
- installation tool kit

Applications

- Airport wall lining
- Infrastructure
- Shopping Malls
- Education
- Health Care
- Transportation: Tunnel, rail stations





FunderMax North America, Inc.

9401-P Southern Pine Blvd.

US-Charlotte, NC 28273

T: +1 980 299 0035, F: +1 704 280 8301

office.america@fundermax.biz, www.fundermax.us

MEMBER OF *Constantia* INDUSTRIES